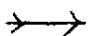
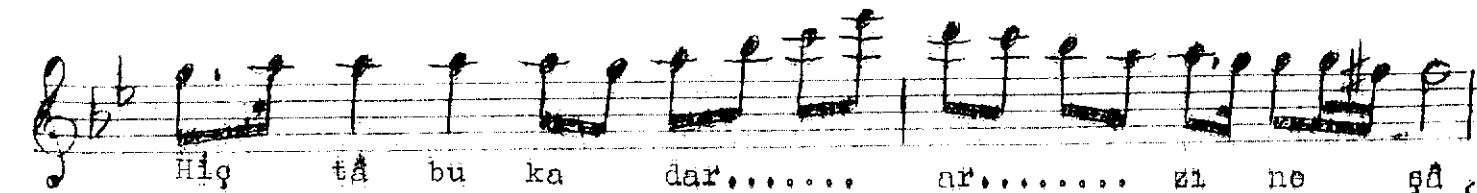
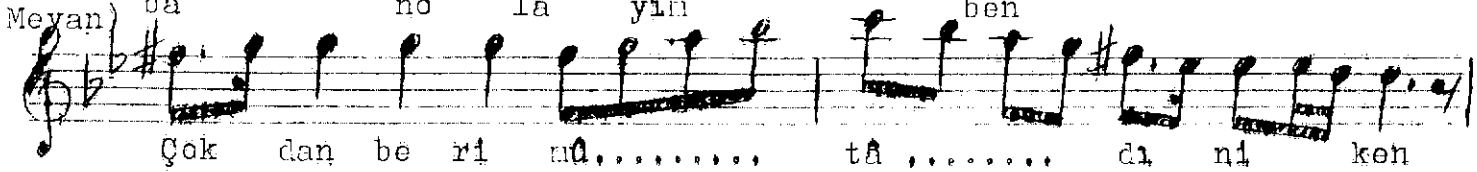
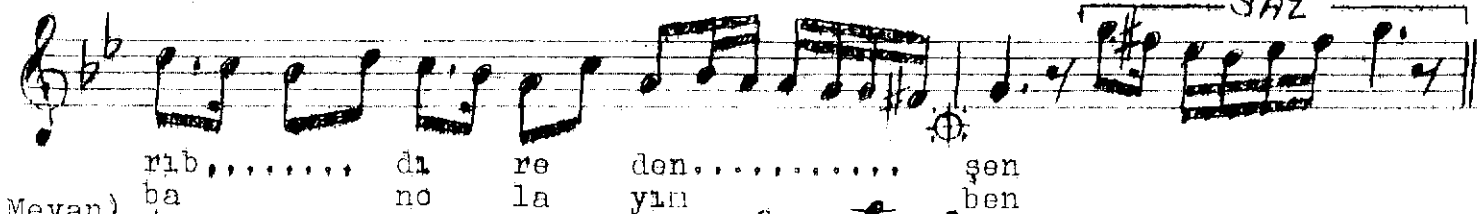
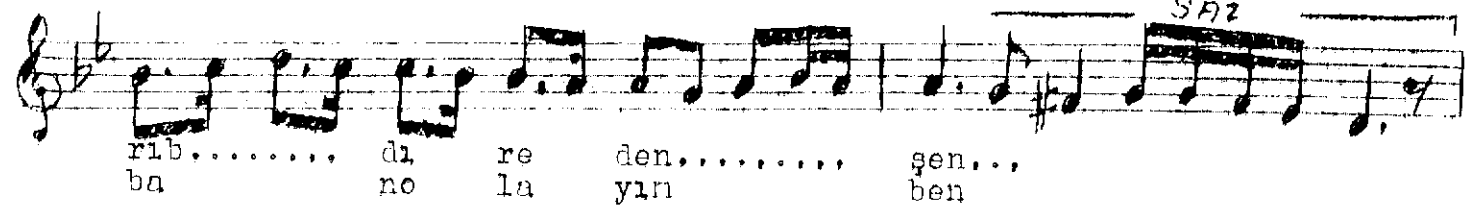
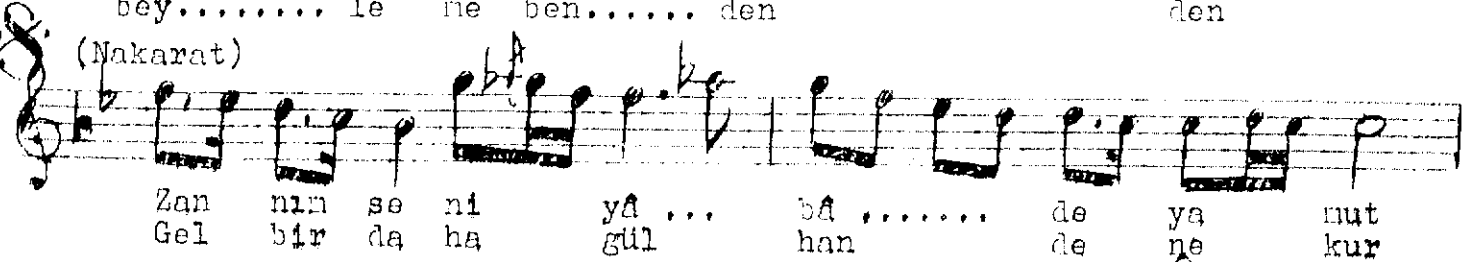
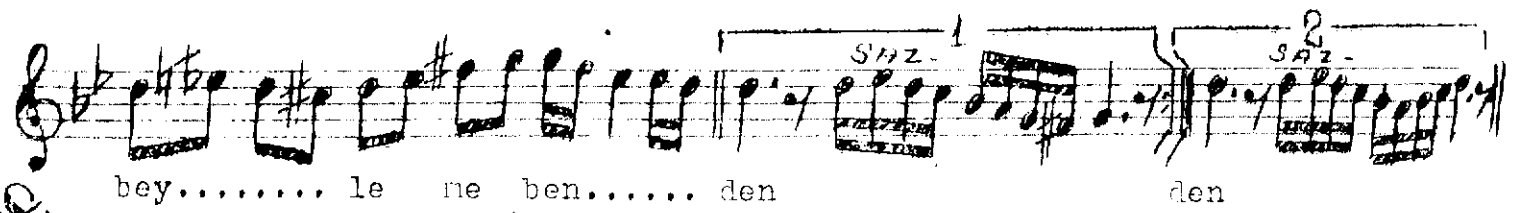
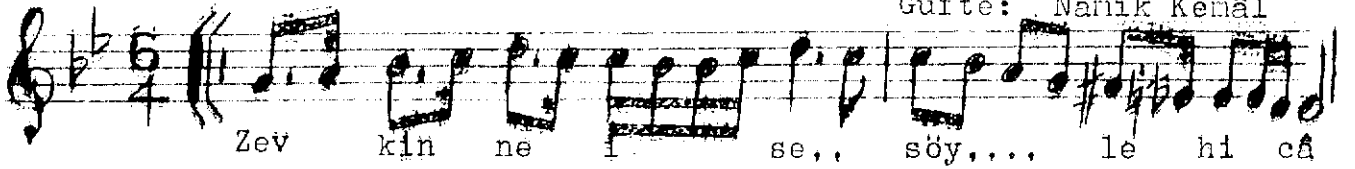


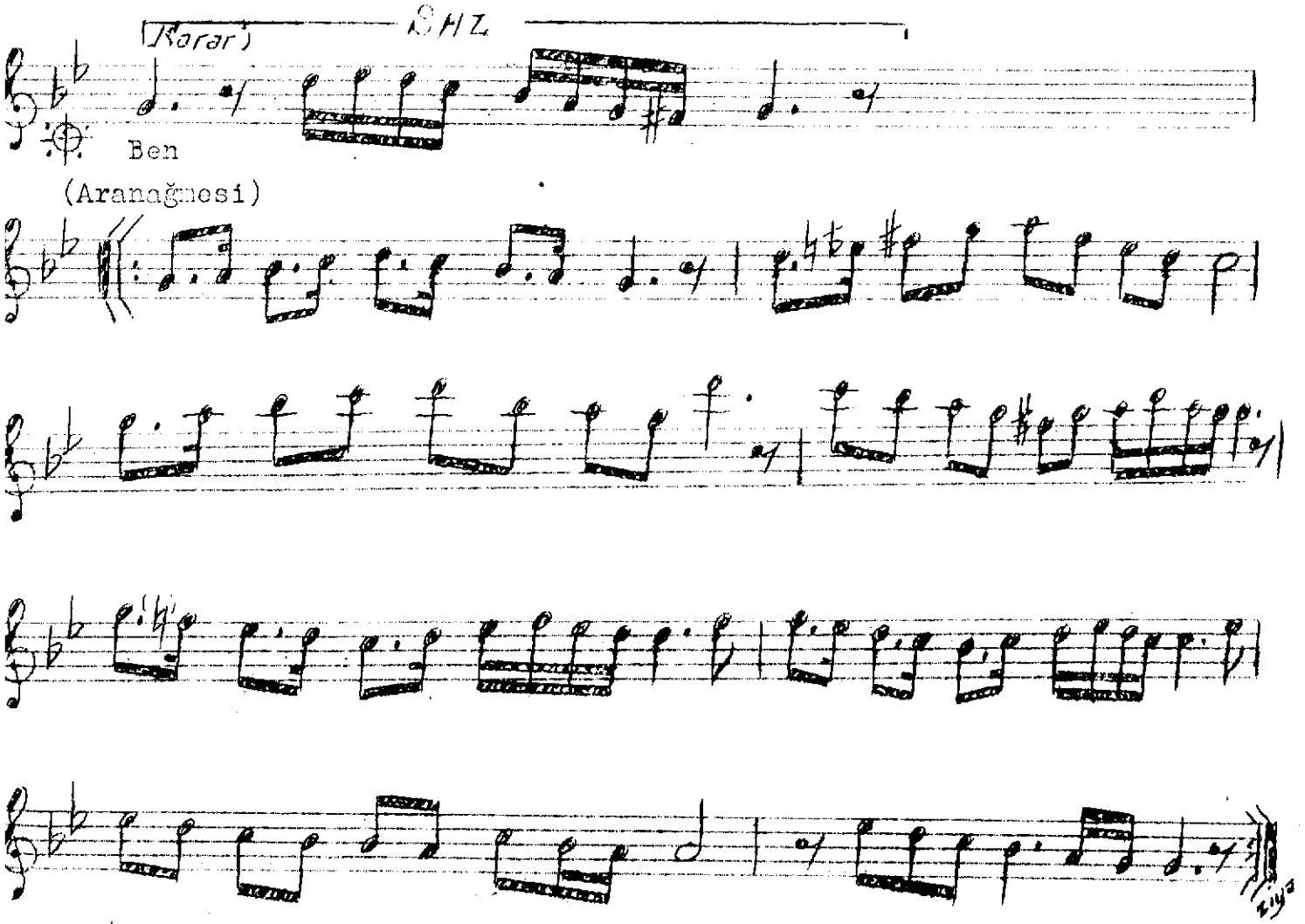
Sengin Semâî

NIHAVEND ŞARKI

Beste: Lenî Atla

Güfte: Nânik Kemâl





Zevkin ne iş söyle hicâb eylene benden  
 Zannın seni yâ bâde ya nutrıbdır eden şen  
 Çokdan beri mûtâdın iken sohbet-i gülşen  
 Hiç tâ bu kadar, arz-ı neşât eylemedin sen  
 Gel bir daha gül handene kurbân olayım ben.

Hicâb etmek	- utanmak
Bâde	- içki
Mutrib	- saz takımı
Mûtâd	- itiyat
Gülşen	- gül bahçesi
Arz etmek	- sunmak, söylemek
Neşât	- sevinç
Hande	- gülme.